

# COVID 19 PERIOD ONE INLAND SOLUTION

**O**UR

**N**ETWORK

**E**NABLE

[www.one-line.com](http://www.one-line.com)



**IN THIS PERIOD OF COVID 2019 WE KNOW THAT OUR IMPORT BUSINESS PARTNERS MAY LOOK FOR LOGISTIC SOLUTIONS OUTSIDE FRENCH TERMINALS**

**ONE IS MAINTAINING CURRENT DETENTION/DEMURRAGE/STORAGE TARIFFS WHILE PROPOSING YOU SOME ALTERNATIVE SOLUTIONS TO MINIMIZE YOUR COSTS**





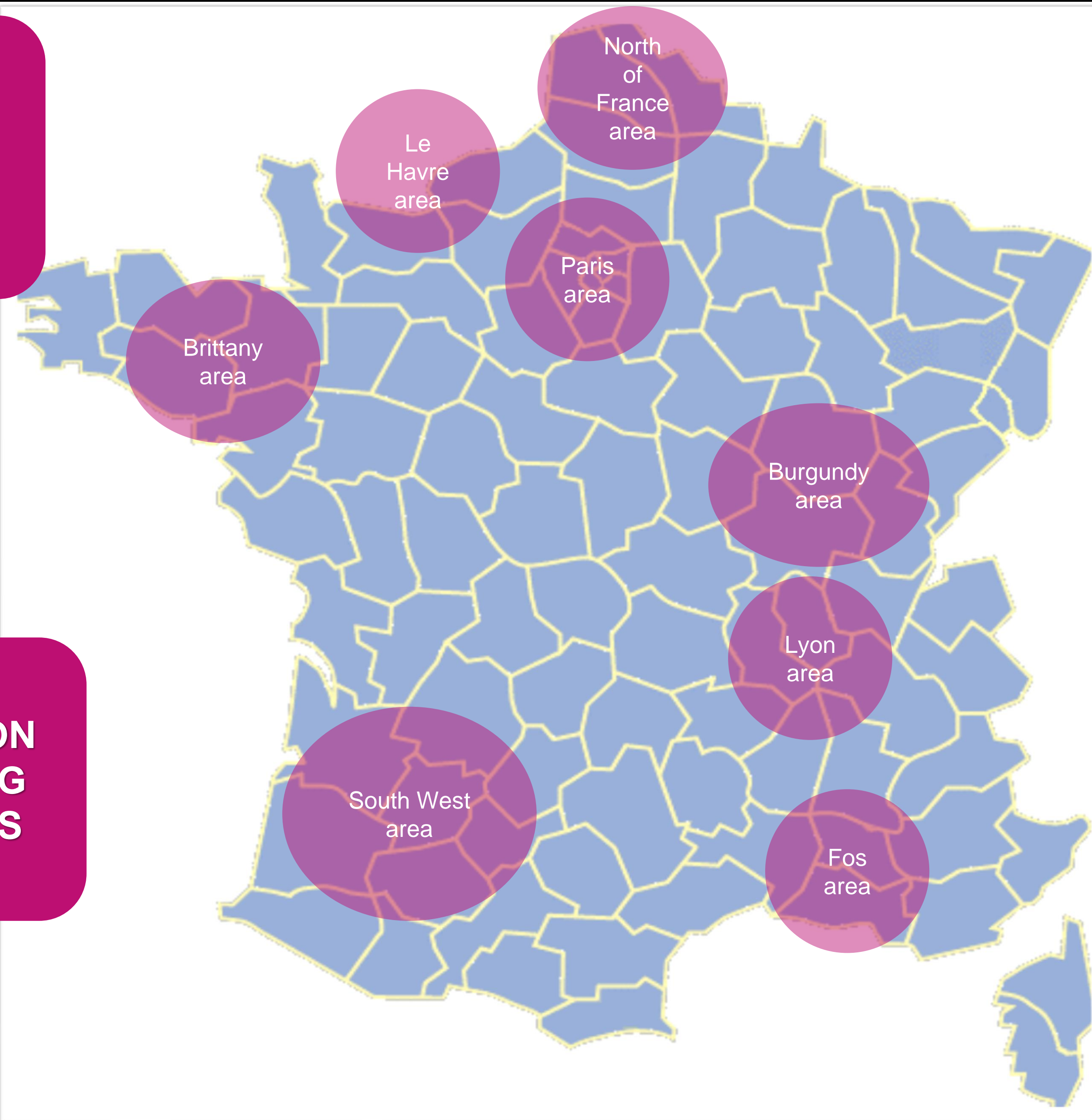
- **WE SUPPORT YOUR WAREHOUSE CONSTRAINTS AND LIMITED SPACE**
- **WE KEEP YOUR CARGOES CLOSE TO YOUR FINAL DEMAND**
- **WE ASSIST YOU REDUCING YOUR SUPPLY CHAIN COSTS**
- **WE OFFER A SUBSTANTIAL STORAGE COSTS SAVINGS**
- **CUSTOMIZED SOLUTIONS / CUSTOMIZED PRICING**

**KEEP ON SHIPPING YOUR CARGOES WITH ONE WE DO CARE AT DESTINATION**



# A FULL PACKAGE OF STORAGE SOLUTIONS

**OFF DOCK STORAGE  
MULTIMODAL OPTION**



**LE HAVRE/PARISCORRIDOR**

**FOS/LYON CORRIDOR**

**BRITTANY**

**BURGUNDY**

**SOUTH WEST**

**NORTH OF FRANCE**

**!!! IST VS NON IST !!!  
BEAR IN MIND CARGO  
CUSTOM STATUS**

**INNOVATIVE SOLUTION  
CUSTOMIZED PRICING  
PLEASE CONTACT US**



**Thank you.**



**ONE**  
OCEAN NETWORK EXPRESS