



Eurasia Rail Market Updates

Week 44, 2023

Oct 30th, 2023 | DB Schenker China Railway Team



Topics

Rail Capacity

Lead-time Performance

Train Frequency

The Performance of “Super Express Train”



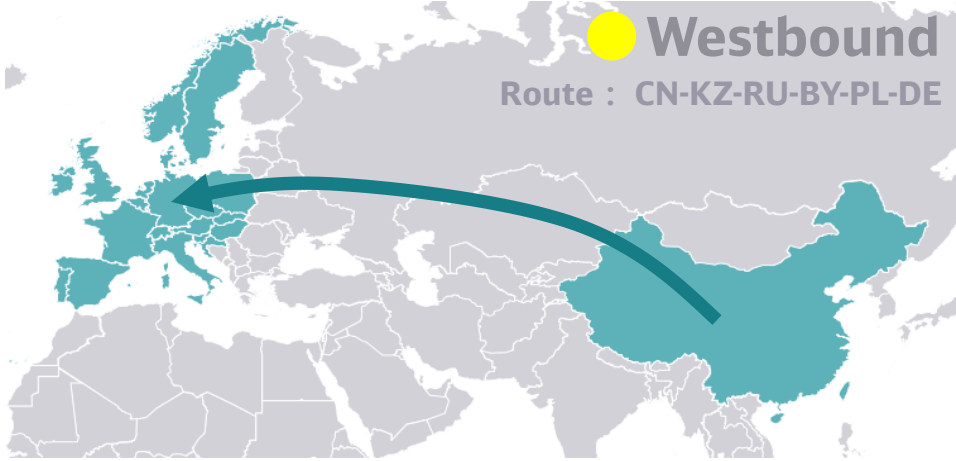
Rail Capacity



Space Capacity

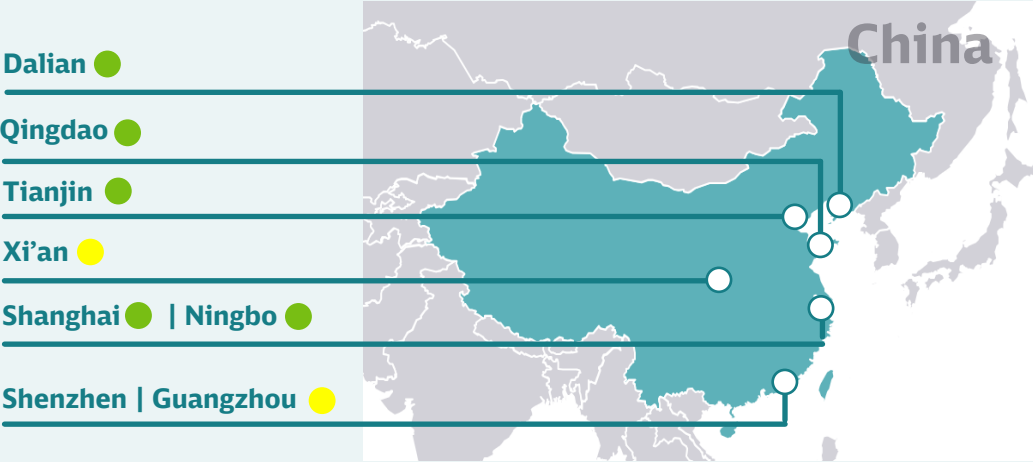
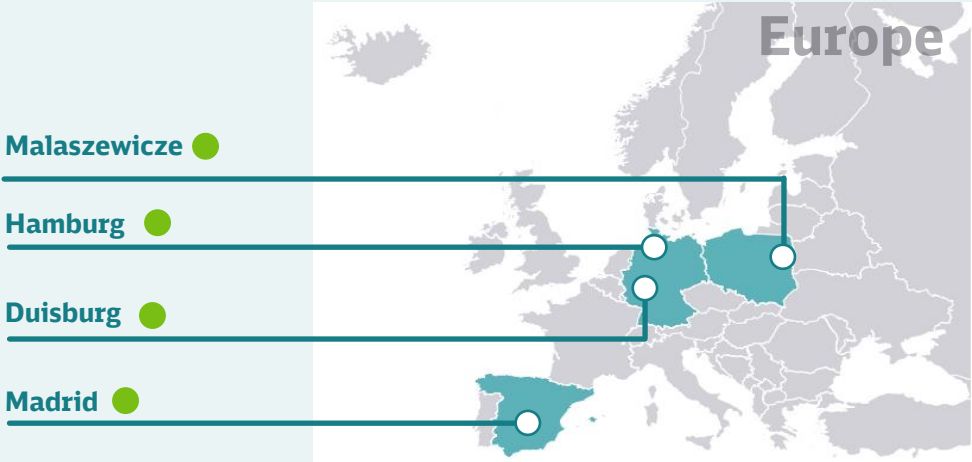
Capacity situation in the next two weeks

The space capacity of WB is getting a bit tight from Nov.



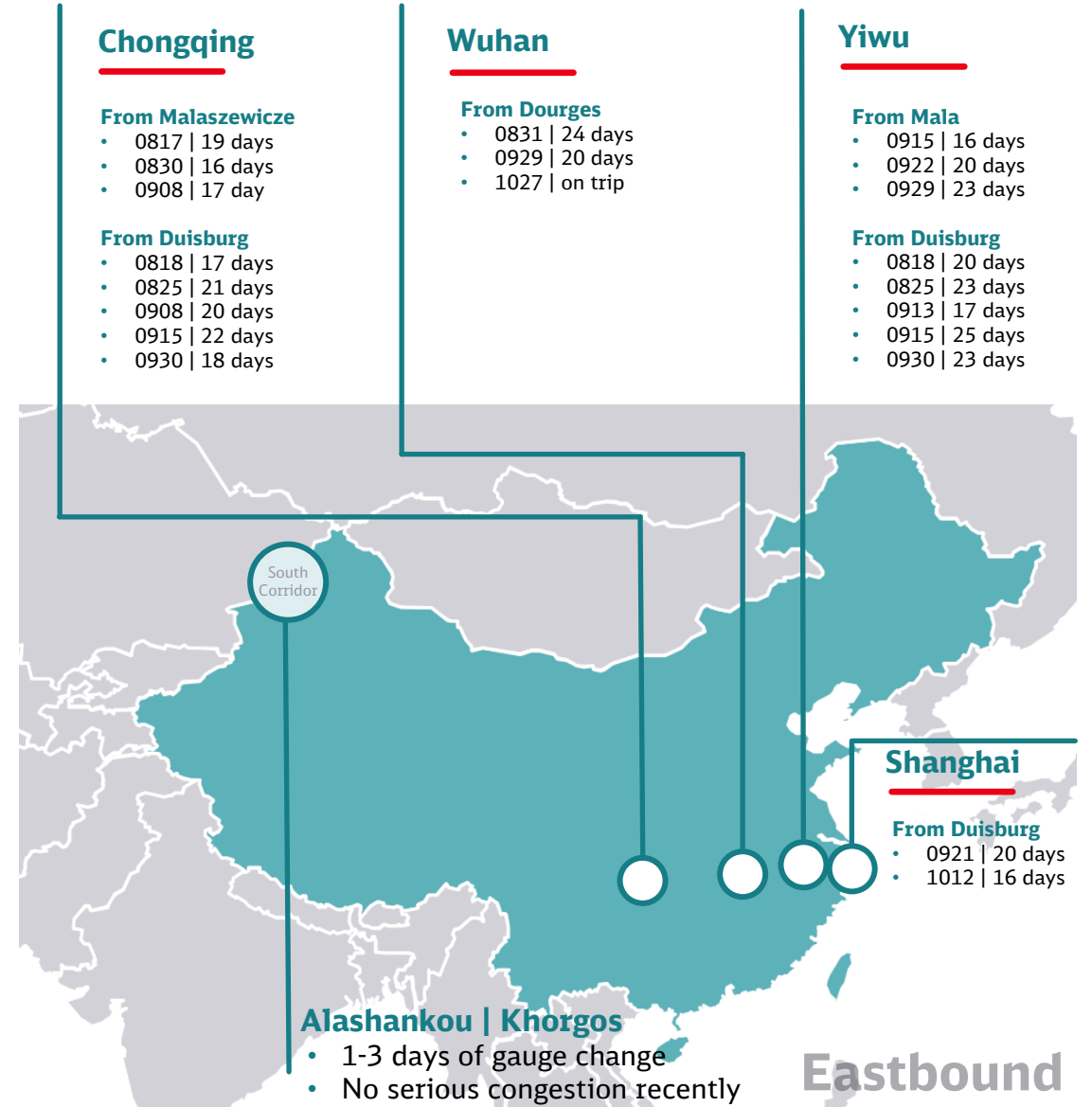
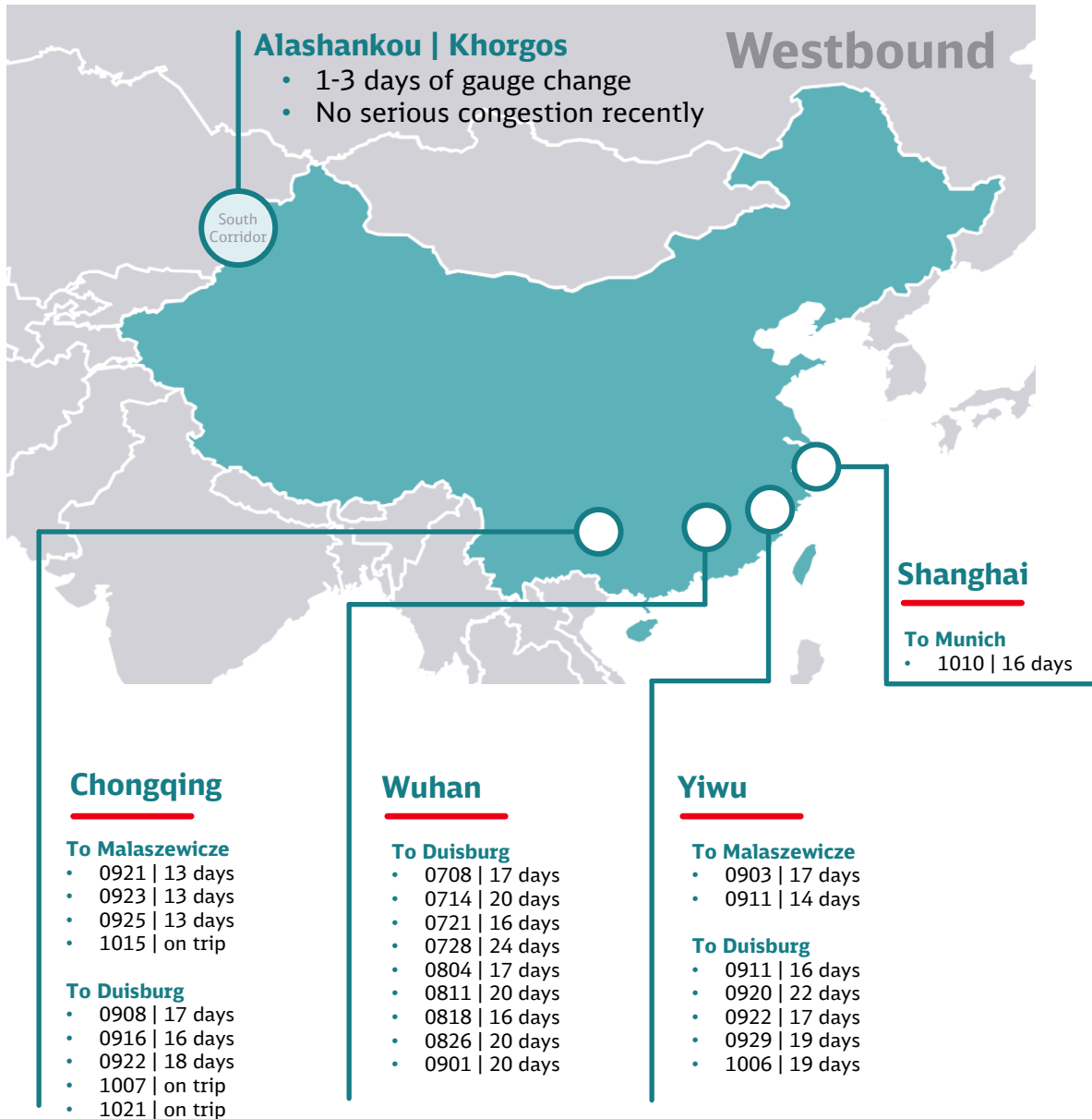
Equipment Availability

Due to the volume imbalance, the equipment availability is in shortage for Westbound, especially at south China



Availability Risk ● Low ● Medium ● High

Lead-time Performance



Train Frequency



OT	DT	REMARK	WEEK 44							WEEK 45							WEEK 46							WEEK 47						
			10/30 Mon	10/31 Tue	11/1 Wed	11/2 Thu	11/3 Fri	11/4 Sat	11/5 Sun	11/6 Mon	11/7 Tue	11/8 Wed	11/9 Thu	11/10 Fri	11/11 Sat	11/12 Sun	11/13 Mon	11/14 Tue	11/15 Wed	11/16 Thu	11/17 Fri	11/18 Sat	11/19 Sun	11/20 Mon	11/21 Tue	11/22 Wed	11/23 Thu	11/24 Fri	11/25 Sat	11/26 Sun
Xian	Duisburg Hamburg	Super Express			●			●			●			●			●			●				●			●			
Chengdu	Lodz	Super Express					●					●						●							●					
Yiwu	Duisburg	Fast train					●					●							●							●				
Chongqing	Duisburg Hamburg	Public Train					●					●							●							●				
Chongqing	Malaszewicze	Public Train				●	●			●		●			●			●	●			●			●		●			
Yiwu	Duisburg Hamburg Malaszewicze	Public Train	●					●		●			●						●			●					●			
Wuhan	Duisburg Hamburg Malaszewicze	Public Train					●						●						●							●				

OT	DT	REMARK	WEEK 44							WEEK 45							WEEK 46							WEEK 47						
			10/30 Mon	10/31 Tue	11/1 Wed	11/2 Thu	11/3 Fri	11/4 Sat	11/5 Sun	11/6 Mon	11/7 Tue	11/8 Wed	11/9 Thu	11/10 Fri	11/11 Sat	11/12 Sun	11/13 Mon	11/14 Tue	11/15 Wed	11/16 Thu	11/17 Fri	11/18 Sat	11/19 Sun	11/20 Mon	11/21 Tue	11/22 Wed	11/23 Thu	11/24 Fri	11/25 Sat	11/26 Sun
Duisburg	Xian	Super Express		●						●							●								●					
Lodz	Chengdu	Super Express				●						●						●							●					
Duisburg	Yiwu	Fast train					●						●						●							●				
Duisburg Hamburg	Chongqing	Public Train					●						●						●							●				
Duisburg Hamburg	Yiwu	Public Train					●						●						●							●				
Dourges	Wuhan	Block Train																												

planned

The frequency is only for reference. It could be adjusted based on actual volumes.

The Performance of “ Xi’an Super Express Train”



WB EXPRESS

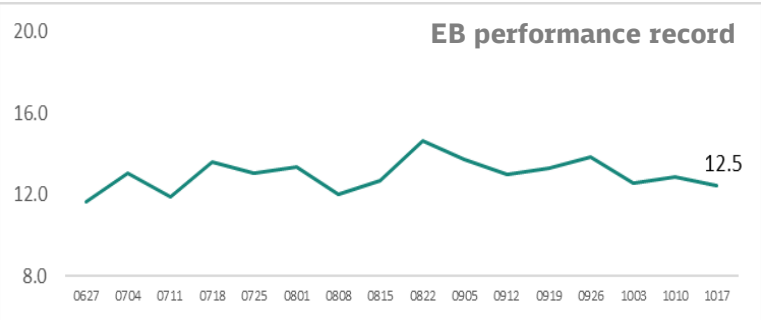
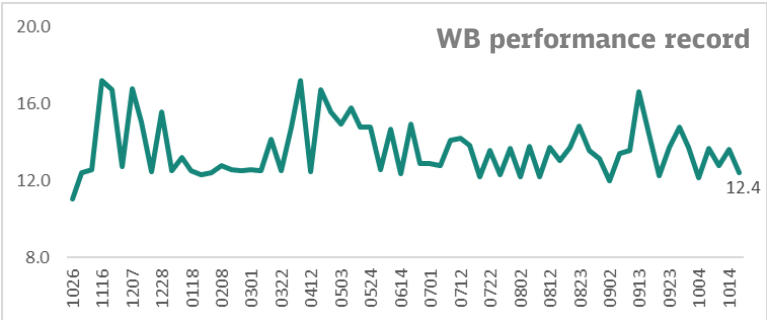
EB EXPRESS

To Duisburg

From Duisburg

- 0902 | 12.0 days
- 0906 | 13.4 days
- 0909 | 13.5 days
- 0913 | 16.6 days
- 0916 | 14.4 days
- 0920 | 12.3 days
- 0923 | 13.7 days
- 0927 | 14.8 days
- 0930 | 13.7 days
- 1004 | 12.1 days
- 1007 | 13.7 days
- 1011 | 12.8 days
- 1014 | 13.6 days
- 1017 | 12.4 days

- 0711 | 11.9 days
- 0718 | 13.6 days
- 0725 | 13.1 days
- 0801 | 13.3 days
- 0808 | 12.0 days
- 0815 | 12.7 days
- 0822 | 14.7 days
- 0905 | 13.7 days
- 0912 | 13.0 days
- 0919 | 13.3 days
- 0926 | 13.8 days
- 1003 | 12.5 days
- 1010 | 12.9 days
- 1017 | 12.5 days



Frequency

Capacity

Lead-time

Weekly departure
2 X WB train
1 X EB train

Cooperated with DBCE,
Schenker has priority

WB < 13 days
EB < 12 days