



Rail Loading Guidance -Insulated Container

- Parameter of Insulated Container
- Load Proposal
- Load Simulation

2022.04 | MMDS



Parameter of Insulated Container



Container Model	Temperature control scope	External Dimension(mm)	Internal Dimension(mm)	Cargo loading Height limited(mm)	Volume (cbm)	Door open size(mm)	Max tare weight(kg)	Max payload(kg)
40' insulated container	-15°C ~ 25°C	L 12,192 W 2,438 H 2,896	L 11,858 W 2,094 H 2,518	2,400	62.5	W 2,090 * H 2,512	8,500	25,500 (23 Ton max payload for rail)



The dims of insulated container is similar as standard container, just please pay attention to:

- The internal width is about 200 mm narrower than standard container, so need to plan well and ensure pallet size is fit for loading.
- The container ground is built in metal materials, to use timber to fix cargo on the ground is not workable. But at inside corner there are several hooks, to use sufficient lashing belt is a solution of reinforcement.

Load Proposal 1

Which package type apply to load

Package type

Applicable

Applicable

Not Applicable

Standard pallet

Loose carton

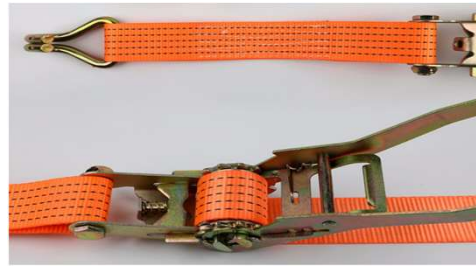
Unpacked or package in special size



Load Proposal 2

How to make lashing

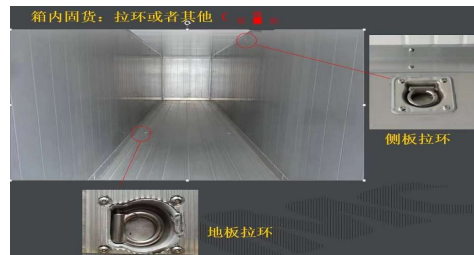
→ Recommended lashing materials lashing belt & air bag



→ Hooks help for lashing

There are 20 x hooks can be found in insulated container

- 10 x hooks on container floor
- 10 x hooks on container left/right side



As shown in the picture, the cargo is well lashed by the belt and chocked by air bag to avoid movement.



*If any question to rail container load, please feel free to consult with Schenker's specialist Vincent.Feng@dbschenker.com



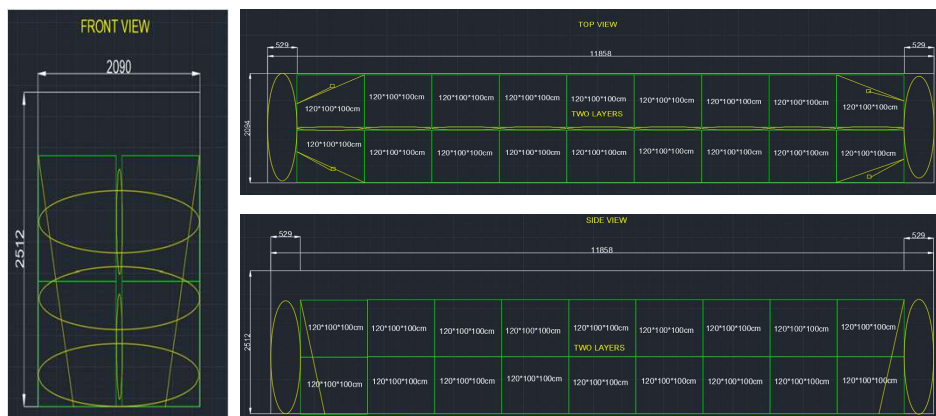
Load Simulation



→ Simulation 1

For standard pallet size
(120*100*100)

Maximum load : 36 x pallets

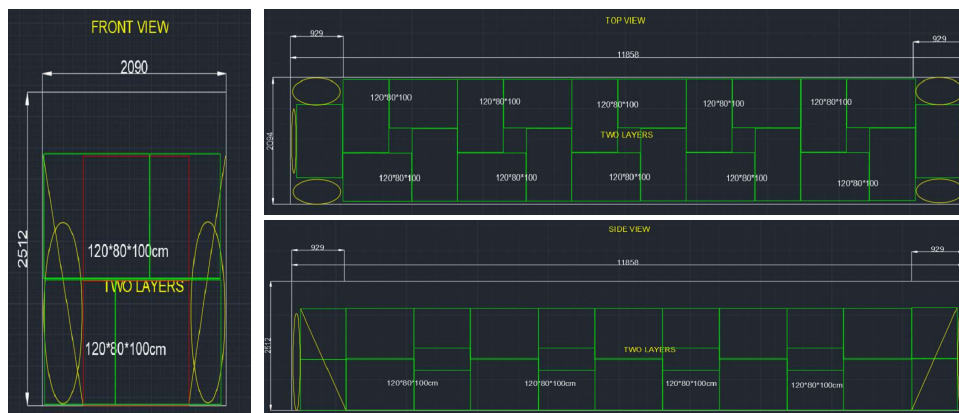


Lashing materials suggest : 6 air bag + 6 lashing belt

→ Simulation 2

For standard pallet size
(120*80*100)

Maximum load : 42 x pallets



Lashing materials suggest : 8 air bag + 6 lashing belt

