



SCHENKER

Eurasia Rail Market Updates Week 23, 2023

May 7th, 2023 | DB Schenker China Railway Team

150 Years
Elevating Lives

01 *Rail Capacity*

02 *Lead-time, border and departure*

03 *The Performance of "Full Operation Schedule" Train*



Rail Capacity



Availability Risk

- High
- Medium
- Low

➤ Space Capacity

Capacity situation in the next two weeks



➤ Equipment Availability

Equipment situation in China



Equipment situation in Europe



Lead-time, Border and Departure situation



➤ Lead-time Performance

Westbound	Malaszewicze Route	Malaszewicze/Warsaw/Lodz, PL	14-20 days	●
		Duisburg/Hamburg/Tilburg, DE	18-24 days	●
Eastbound	Malaszewicze Route	Duisburg/Hamburg, DE	20-26 days	●

➤ Borders Congestion

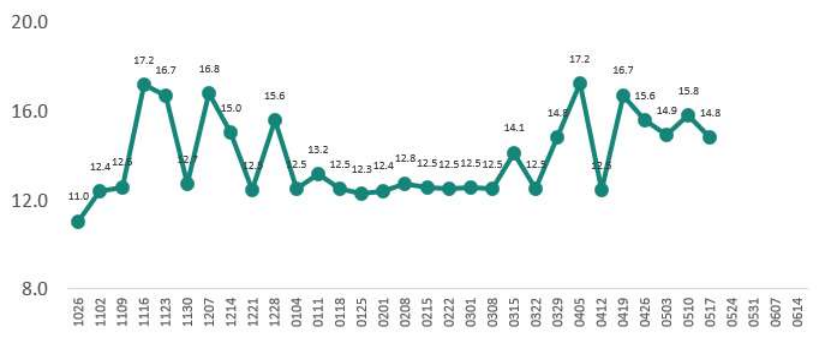
The recent trains could be suffered delay due to infrastructure construction and wagon shortage at border.

CN/KZ border Alashankou Khorgos	CN/MN border Erlian	CN/RU border Manzhouli	BY/PL border Mala Brest	● >7 days ● 3-7 days ● <3 days
<5 days ●	<5 days ●	<3 days ●	<3 days ●	

➤ Departure Delay

Westbound	Just few trains with slight delay but in control	<2 days	● >5 days ● 3-5 days ● <3 days
Eastbound	Most trains are on time departure	<3 days	● <3 days

The Performance of “Full Operation Schedule” Train



On October 26, 2022, The first “**Full Operation Schedule**” (down to minute level) Eurasia train departed out from Xi’an, China. It’s the first time Eurasia railway operates with a fixed schedule of each transit stations, including those outside China. This shows China Rail’s resolve in terms of “quality over quantity” policy and also demonstrated the future on this corridor.

Overall performance has been very stable and satisfactory: China to Germany in **12** days terminal to terminal, weekly departure and DBS has majority of the capacity on such service.

2nd WB and the first EB super express train will be launched as of June, we will again receive majority of capacity.

Real time track & trace according to GPS report, to be continuously updated :

Train	Xi'an China	Alashankou China	Dostyk Kazakhstan	Karaganda Kazakhstan	Chelyabinsk Oblast Russia	Orenburg Oblast Russia	Orsha Belarus	Brest Belarus	Mala Poland	Duisburg Germany
Train No. 29	Day 0	Day 2	Day 2	Day 5	Day 8	Day 8	Day 11	Day 11	Day 13	Day 15
	May-10 4:00	May 12 3:00	May 12 16:00	May-15 14:00	May-18 5:00	May-18 12:00	May-21 3:00	May-21 22:00	May-23 7:00	May-25 23:00
Train No. 30	Day 0	Day 2	Day 2	Day 4	Day 6	Day 6	Day 8	Day 10	Day 12	Day 14
	May-17 4:00	May-19 0:00	May-19 18:00	May-21 1:00	May-23 2:00	May-23 10:00	May-25 23:00	May-27 1:00	May-29 6:00	May-31 23:00
Train No. 31	Day 0	Day 2	Day 2	Day 4	Day 6	Day 7	Day 9	Day 10	Day 12	Day 14
	May-24 4:00	May-26 2:00	May-26 8:00	May-28 13:00	May-30 1:00	May-31 9:00	Juen-2 14:00	June-3 14:00	June-5 8:00	June-7 (planned)
Train No. 32	Day 0	Day 2	Day 3	Day 4						
	May-31 4:00	June-2 0:00	June-3 1:00	June-4 8:00						