



Winter Solution

- Temperature Record for standard container
- Temperature Record for Reefer and Insulated container
- Insulated Container Introduction

2022.01 | MMDS



Summary of Interior Temperature Record -Standard Container

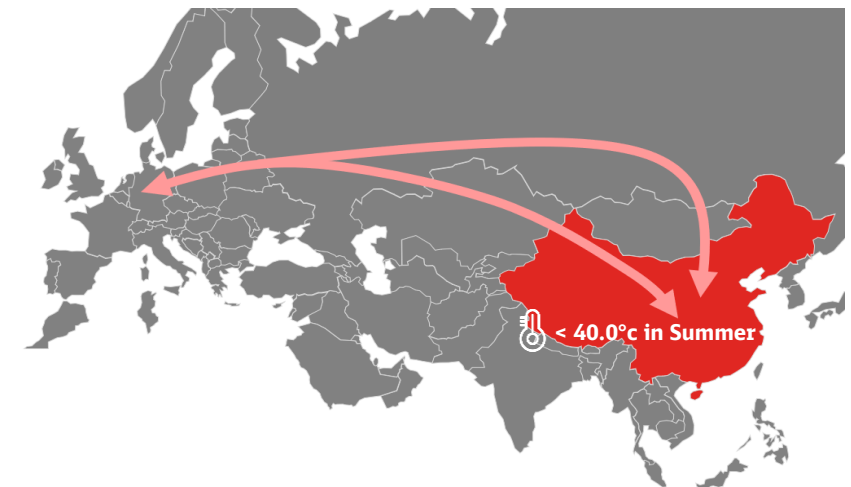
Mon	Jan	Feb	Mar	Apr	May	Jun	Jul	Aug	Sep	Oct	Nov	Dec
High	12.5	15.2	22.3	31.9	32.8	35.6	36.2	40.0	33.3	26.0	15.7	11.4
Location	CN	CN	CN	CN	CN	DE	CN	CN	CN	CN	CN	CN
Low	-35.9	-30.3	-16.6	0.2	3.3	7.3	10.4	11.3	4.5	1.3	-9.6	-23.7
Location	RU	RU	RU	RU	KZ	KZ	KZ	KZ	RU	RU	KZ	RU

Winter season
Nov-Mar



- Extremely lowest temperature is -35.9°C in Russian in Jan

Summer season
Jun-Aug



- Extremely highest temperature is 40.0°C in China in Aug



Summary of Interior Temperature Record -Reefer and Insulated container

Reefer container

Mon	Jan	Feb	Mar	Apr	May	Jun	Jul	Aug	Sep	Oct	Nov	Dec
High	2.1	3.6	5.2	-	-	-	-	-	-	-	3.0	3.2
Location	CN	CN	CN	-	-	-	-	-	-	-	KZ	PL
Low	-5.1	-3.9	-3.0	-	-	-	-	-	-	-	-3.5	-4.7
Location	RU	RU	RU	-	-	-	-	-	-	-	KZ	RU



Temperature control scope : $0 \pm 10^{\circ}\text{C}$
Default temperature set at 0°C

Insulated container

Mon	Jan	Feb	Mar	Apr	May	Jun	Jul	Aug	Sep	Oct	Nov	Dec
High	13.5	16.5	20.3	23.3	22.2	22.6	23.1	24.8	23.3	19.7	17.7	12.6
Location	CN	CN	CN	CN	CN	DE	CN	CN	CN	CN	CN	CN
Low	-14.6	-14.2	-8.3	1.6	5.6	10.3	14.4	15.8	8.5	3.7	-4.8	-12.7
Location	RU	RU	RU	RU	KZ	KZ	KZ	KZ	RU	RU	RU	RU

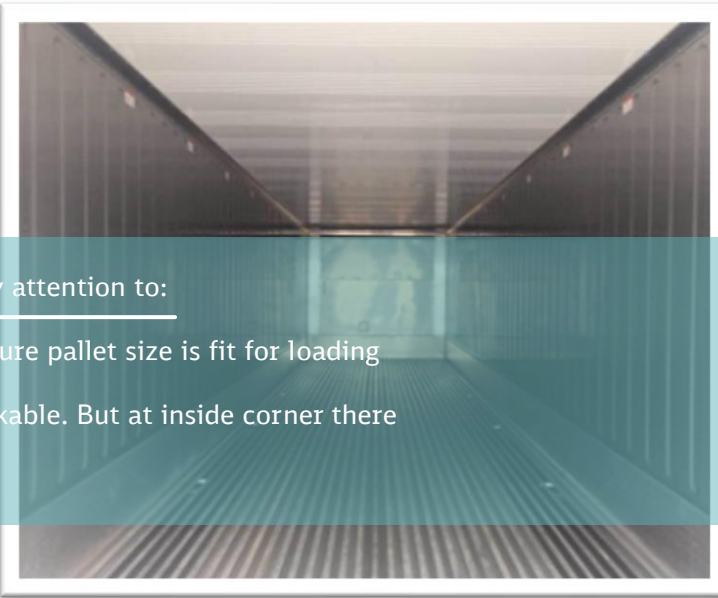
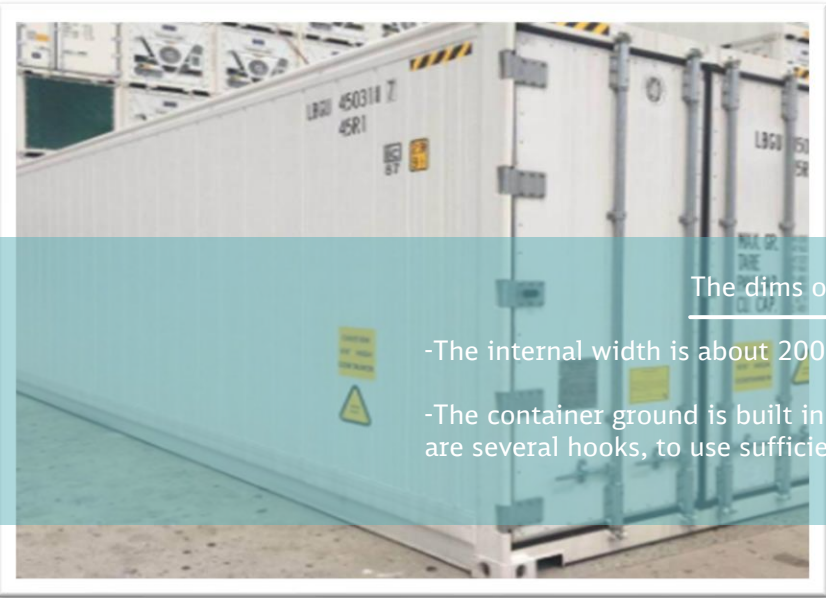


Temperature control scope : $-15^{\circ}\text{C} \sim 25^{\circ}\text{C}$

Parameter of Insulated Container



Container Model	Temperature control scope	External Dimension(mm)	Internal Dimension(mm)	Cargo loading Height limited(mm)	Volume (cbm)	Door open size(mm)	Max tare weight(kg)	Max payload(kg)
40' insulated container	-15°C ~ 25°C	L 12,192 W 2,438 H 2,896	L 11,858 W 2,094 H 2,518	2,400	62.5	W 2,090 * H 2,512	8,500	25,500 (23 Ton max payload for rail)



The dims of insulated container is similar as standard container, just please pay attention to:

- The internal width is about 200 mm narrower than standard container, so need to plan well and ensure pallet size is fit for loading
- The container ground is built in metal materials, to use timber to fix cargo on the ground is not workable. But at inside corner there are several hooks, to use sufficient lashing belt is a solution of reinforcement.